

Right Angle Check Valve In-line Check Valve

320 ℓ /min
21MPa

Features

- ① The right angle type check valve changes the flow direction of fluid 90 degrees, while the in-line check valve allows only axial direction flow.
- ② The cracking pressures of these valves are fixed, so fluid passes freely in one direction, but is restricted from flowing in the opposite direction.

Specifications

| | Model No. | | Nominal Diameter (Size) | Maximum Working Pressure MPa{kgf/cm ² } | Maximum Flow Rate ℓ /min | Cracking Pressure MPa{kgf/cm ² } | Weight kg | |
|-------------------------|-----------------------|-----------------------|-------------------------|--|--------------------------|---|-----------|--------|
| | Screw Mounting | Gasket Mounting | | | | | T Type | G Type |
| Right Angle Check Valve | CA-T03-1-20 2 3 | CA-G03-1-20 2 3 | 3/8 | 21{214} | 40 | 0.04{0.4} 0.35{3.6} 0.50{5.1} | 1.0 | 1.8 |
| | CA-T06-1-20 2 3 | CA-G06-1-20 2 3 | 3/4 | | 110 | 0.04{0.4} 0.35{3.6} 0.50{5.1} | 2.2 | 3.9 |
| | CA-T10-1-20 2 3 | CA-G10-1-20 2 3 | 1 1/4 | | 320 | 0.04{0.4} 0.35{3.6} 0.50{5.1} | 4.0 | 6.1 |
| In-line Check Valve | CN-T03-1-11 2 3 | - | 3/8 | | 30 | 0.04{0.4} 0.35{3.6} 0.50{5.1} | 0.4 | - |
| | CN-T06-1-11 2 3 | | 3/4 | | 75 | 0.04{0.4} 0.35{3.6} 0.50{5.1} | 0.7 | |
| | CN-T10-1-11 2 3 | | 1 1/4 | | 190 | 0.04{0.4} 0.35{3.6} 0.50{5.1} | 2.2 | |

● Handling

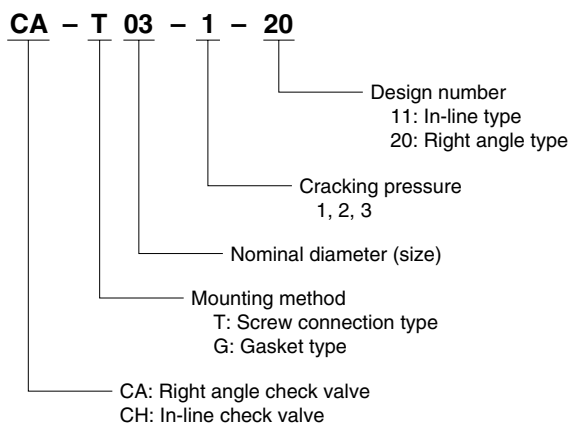
- ① Use the following table for specification when a sub plate is required.
- ② The following are the bundled mounting bolts.

| Model No. | Pipe Diameter | Recommended Flow Rate ℓ /min | Weight kg | Applicable Valve Type |
|-----------|---------------|------------------------------|-----------|-----------------------|
| MCA-03-20 | 3/8 | 40 | 1.4 | CA-G03-*-20 |
| MCA-06-20 | 3/4 | 110 | 3.5 | CA-G06-*-20 |
| MCA-10-20 | 1 1/4 | 320 | 6.1 | CA-G10-*-20 |

| Model No. | Bolt Dimensions | Q'ty | Tightening Torque N·m{kgf·cm} |
|-------------|-----------------|------|-------------------------------|
| CA-G03-*-20 | M8 × 45 ℓ | 4 | 20 to 25{ 205 to 255} |
| CA-G06-*-20 | M16 × 65 ℓ | 4 | 190 to 235{1940 to 2400} |
| CA-G10-*-20 | M20 × 75 ℓ | 4 | 370 to 460{3770 to 4690} |

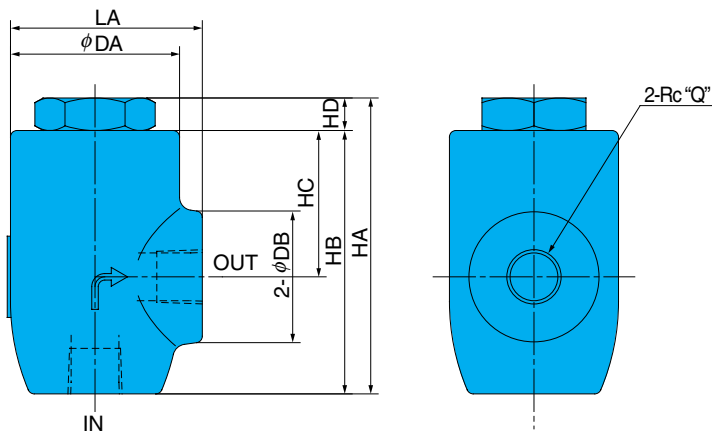
Note) For mounting bolts, use 12T or equivalent.

Understanding Model Numbers



Installation Dimension Drawings

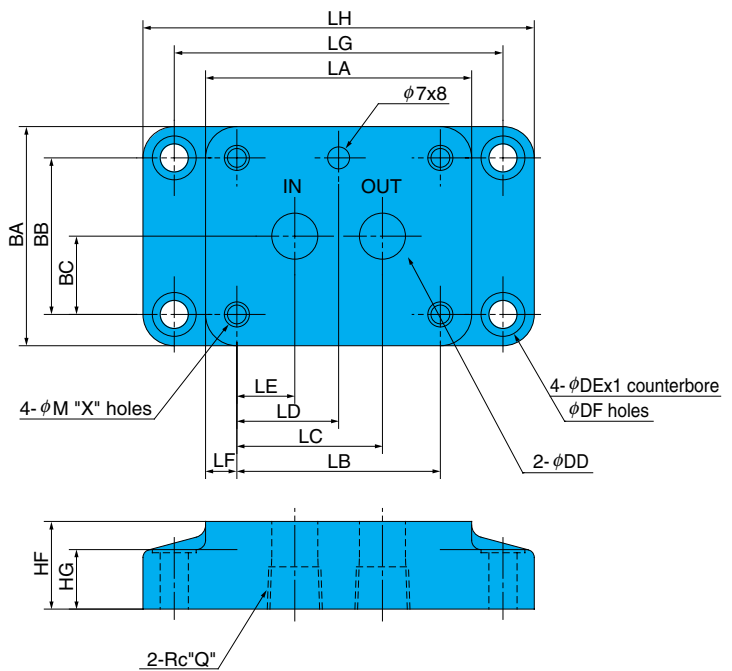
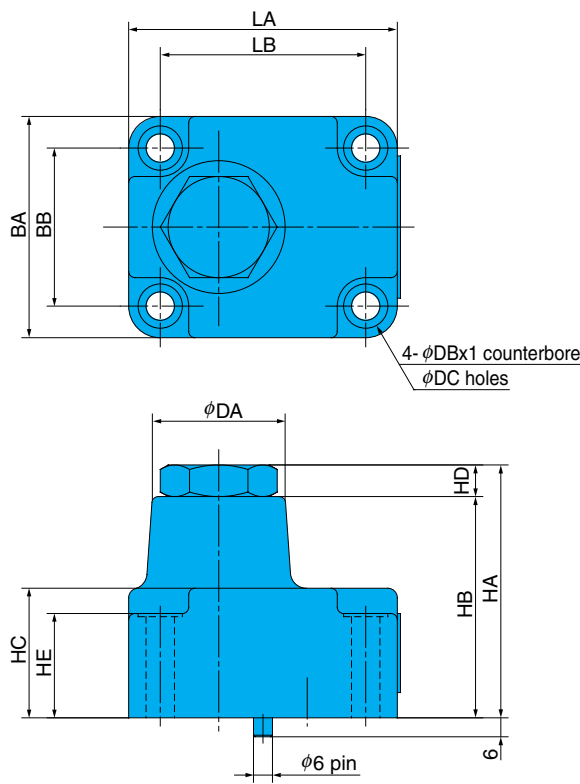
CA-T**-20(Screw Mounting)



| Model No. | LA | HA | HB | HC | HD | DA | DB | Q |
|-------------|----|-----|-----|----|----|----|----|-------|
| CA-T03-*-20 | 59 | 91 | 81 | 45 | 10 | 52 | 40 | 3/8 |
| CA-T06-*-20 | 72 | 106 | 96 | 55 | 10 | 60 | 45 | 3/4 |
| CA-T10-*-20 | 96 | 139 | 127 | 70 | 12 | 80 | 62 | 1 1/4 |

CA-G**-20(Gasket Mounting)

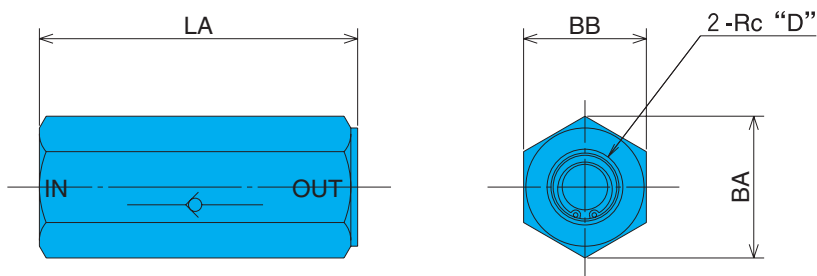
Sub Plate MCA**-20



| DC | DD | DE | DF | Q | X |
|----|------|----|----|-------|----|
| 9 | 14.7 | 14 | 9 | 3/8 | 8 |
| 17 | 23 | 20 | 14 | 3/4 | 16 |
| 22 | 30 | 20 | 14 | 1 1/4 | 20 |

| Model No. | LA | LB | LC | LD | LE | LF | LG | LH | BA | BB | BC | HA | HB | HC | HD | HE | HF | HG | DA | DB |
|-------------|-----|----|------|------|------|------|-----|-----|-----|----|------|-----|-----|----|----|----|----|----|----|----|
| CA-G03-*-20 | 86 | 65 | 46.5 | 32.5 | 18.5 | 10.5 | 105 | 125 | 71 | 50 | 25 | 80 | 70 | 41 | 10 | 33 | 28 | 19 | 42 | 14 |
| CA-G06-*-20 | 117 | 81 | 68.2 | 40.5 | 22.2 | 18 | 140 | 172 | 101 | 65 | 32.5 | 98 | 88 | 58 | 10 | 43 | 31 | 19 | 52 | 26 |
| CA-G10-*-20 | 133 | 92 | 71.4 | 46 | 20.6 | 20.5 | 152 | 187 | 133 | 92 | 46 | 119 | 107 | 65 | 12 | 46 | 40 | 28 | 68 | 32 |

CN-T**-11(Screw Mounting)



| Model No. | LA | BA | BB | D |
|-------------|-----|------|----|-------|
| CN-T03-*-11 | 70 | 31.2 | 27 | 3/8 |
| CN-T06-*-11 | 95 | 43.9 | 38 | 3/4 |
| CN-T10-*-11 | 130 | 69.3 | 60 | 1 1/4 |

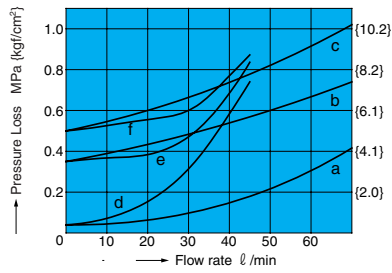


Performance Curves

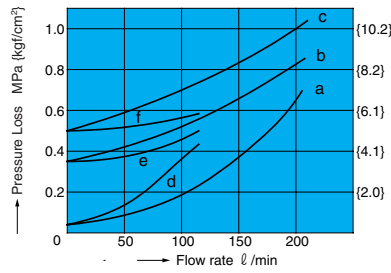
Hydraulic Operating Fluid Viscosity 32mm²/s

Pressure Loss Characteristics

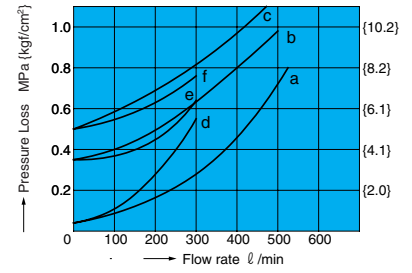
CA-*03 CN-T03



CA-*06 CN-T06



CA-*10 CN-T10



Applicable Valve Type

- a. CA-*03-1-20
- b. CA-*03-2-20
- c. CA-*03-3-20
- d. CN-T03-1-11
- e. CN-T03-2-11
- f. CN-T03-3-11

Applicable Valve Type

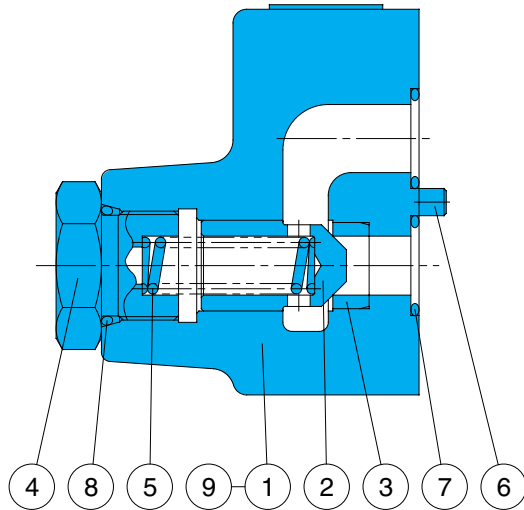
- a. CA-*06-1-20
- b. CA-*06-2-20
- c. CA-*06-3-20
- d. CN-T06-1-11
- e. CN-T06-2-11
- f. CN-T06-3-11

Applicable Valve Type

- a. CA-*10-1-20
- b. CA-*10-2-20
- c. CA-*10-3-20
- d. CN-T10-1-11
- e. CN-T10-2-11
- f. CN-T10-3-11

Cross-sectional Drawing

CA-G**-*-20



| Part No. | Part Name |
|----------|-----------|
| 1 | Body |
| 2 | Poppet |
| 3 | Seat |
| 4 | Plug |
| 5 | Spring |
| 6 | Pin |
| 7 | O-ring |
| 8 | O-ring |
| 9 | Nameplate |

Seal Part List (Kit Model Number DAS-***)

| Part No. | Part Name | Type/Part Number | | | Q'ty |
|----------|-----------|------------------|--------|--------|------|
| | | CA-*03 | CA-*06 | CA-*10 | |
| 7 | O-ring | 1B-P18 | 1B-G30 | 1B-G40 | 2 |
| 8 | O-ring | 1B-P22 | 1B-P30 | 1B-P42 | 1 |

Note) O-ring 1B-** refers to JIS B2401-1B-**.

*** in the kit number is used for specification of the valve size (G03, T06, etc.)